



Office Phone: 601-656-9768 Office Fax: 601-656-0192  
 www.deancoauction.com  
 Email: sold@deancoauction.com



Presorted  
**FIRST-CLASS MAIL**  
 US POSTAGE  
 PAID  
 Jacksonville, FL  
 Permit No. 877

RETURN SERVICE REQUESTED

**TIME SENSITIVE MATERIAL  
 PLEASE DELIVER ON TIME**

# HUGE 1-DAY PUBLIC AUCTION

## Thursday, May 28<sup>th</sup> 2026 9:00am

1042 Holland Ave (Highway 19 South) Philadelphia, Mississippi 39350

**LIVE BIDDING  
 ONSITE OR ONLINE**



2026 Mack P164T  
(4K mi.)

**HUGE 1-Day Contractors' Equipment  
 & Truck Public Auction**

**THURSDAY, MAY 28<sup>th</sup> 2026  
 AUCTION STARTS AT 9:00AM**

1042 Holland Ave (Highway 19 South)  
 Philadelphia, Mississippi 39350

**LIVE ONSITE AND ONLINE BIDDING - DRIVE-THRU AUCTION HELD RAIN OR SHINE**



Unused 2026 Peterbilt 536  
(1105 mi.) FET is Paid

**PLEASE NOTE: Buyers premium is 10% on the first \$5000  
 then 3% on the remaining balance of each item.**



2024 John Deere  
 5100E MFWD  
 (34 Hours)



2023 John Deere 160 P-Tier (425 Hours)  
 Remaining 5-year, 3000 hr Extended Warranty

**Open to  
 the public**



**For more info call  
 601-656-9768  
 or email  
 sold@deancoauction.com**



**www.DeancoAuction.com**

1042 Holland Ave (Hwy 19 S) Philadelphia, MS 39350  
 Ph: 601-656-9768 • sold@deancoauction.com

Auctioneers: Donnie W. Dean, MS Lic. 733 & Wes Dean, MS Lic. 1322,  
 MS Gallery Lic. 835F



2011 John Deere  
 825R MFWD



2013 Peterbilt 388 (122K mi.)



1995 Trail King  
 TK100HDG-493



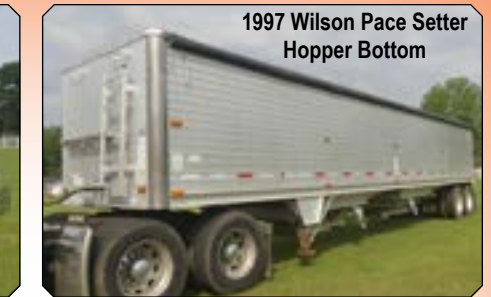
1980 Peterbilt 359



(2) 2017 Freightliner  
 Cascadia



(1 of 2) 2020 Mack  
 Granite GR64FT (293K mi.)



1997 Wilson Pace Setter  
 Hopper Bottom



2017 Peterbilt 389



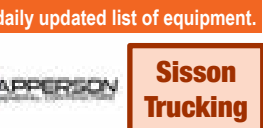
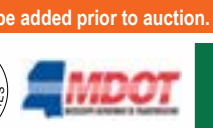
(2) 2020 Mack Granite GR64FT  
 (293K & 355K mi.)



**HUGE 1-Day Equip. & Truck Auction - Thurs., May 28<sup>th</sup> 9am**  
 1042 Holland Ave, Philadelphia, Mississippi 39350  
 Phone: 601-656-9768 Fax: 601-656-0192 www.deancoauction.com

Running  
 2 Rings !!

Many more items will be added prior to auction. Check our website for a daily updated list of equipment.



(1 of 4) 2020 Mack  
 P164T



Kubota M7060D MFWD (588 hrs)

**TRUCK TRACTORS - Ring 1**  
**2026 Mack P164T Pinnacle Truck Tractor**, s/n 1M1PN3GY6TM020151: T/A, Day Cab, Gold Dog, Mack MP8-415 Eng., mDrive HD 12-sp. Auto, 14.6K Front, 44K Rears, Wet Line Kit, Air Ride Susp., Drum Brakes, 20" WB, 22.5" Tires, 4K mi.  
**(4) 2020 Mack P164T Truck Tractors**, s/n 05915, 05931, 05937, 05929: T/A, Day Cab  
**2018 Peterbilt 389 Truck Tractor**, s/n 1XPXD49XX-JD346947: T/A, Day Cab, Paccar Eng., 13-sp., Air Ride Susp., 24.5 Tires, 618K mi.  
**2017 Peterbilt 389 Truck Tractor**, s/n 1XPXD-P9X2HD419336: T/A, Day Cab, Cummins Eng., 10-sp., Air Ride Susp., 24.5 Tires, 642K mi.  
**2017 Peterbilt 389 Truck Tractor**, s/n 1XPXDPOX-3HD49314: T/A, 48" Flat Top Sleeper, Paccar MX13 500hp Eng., Eaton Fuller 18-sp., 14320 Front, 46K Rears, Eng. Brake, Diff Lock, 242"

WB, Air Susp., Alum. Wheels, 11R24.5 Tires, Wet Kit, Sliding 5th Wheel, Dual Fuel Tanks, Headache Rack  
**2017 Freightliner Cascadia Truck Tractor**, s/n 3AKJGBDV3HSDJ8054: T/A, Day Cab, Auto, 789K mi.  
**2017 Freightliner Cascadia Truck Tractor**, s/n 3AKJGBDV1HSDJ8053: T/A, Day Cab, Detroit Eng., Auto, 757K mi.  
**2015 Kenworth Truck Tractor**, s/n 1NKAGGG-G00R495144: Glidered, T/A, Sleeper, Cummins ISX 475 Eng., Eaton Fuller 18-sp., Wet Kit, 721K mi.  
**2015 Mack CXU613 Truck Tractor**, s/n 1M1AW09Y0FM049762: T/A, Day Cab, Mack MP8-415C Eng., mDrive Auto, 11R22.5 Tires, 517K mi.  
**2013 Peterbilt 388 Truck Tractor**, s/n 1XPWD-P9X2DD199640: T/A, Day Cab, Paccar Eng., Auto, Dual Stacks, Dual Breathers, Dual Line Wet Kit, 122K mi.  
**2013 Cat CT660L Truck Tractor**, s/n 1HSJKTLT-7DJ244256: 3-axle, Day Cab, Cat C15 Eng., 18-sp., 46K Rears, Air Ride, 18K Front, 248" WB, 11R24.5 Rears, 315/80R22.5 Fronts, 203K mi.  
**2013 Mack CHU613 Truck Tractor**, s/n 1M1AN07Y-0DM015047: T/A, Day Cab, Mack Eng., Auto, Headache Rack, Wet Kit, 399K mi.  
**2012 Mack CHU613 Truck Tractor**, s/n 1M1AN09Y-9CM008352: Mack MP8 Eng., Eaton 13-sp., Wet Line, Air Brakes, Air Ride Cab, Camelback Susp., Sliding 5th Wheel, Dual Stacks, 24.5 Tires, 59K mi.  
**2007 Volvo Truck Tractor**, s/n 4V4LC9K-J67N481680: Tri-axle, Day Cab, Volvo VE-D16 500hp Eng., Eaton 18-sp., Headache Rack, 285/75R24.5 Front & Rear Tires, 385/65R22.5 3rd Axle, 591K mi.  
**2006 International 9200i Truck Tractor**, s/n 2HSCESBR56C266256: T/A, Day Cab, Cat C13 Eng., Eaton Fuller Auto, 12K Front, 40K Rears, 11R22.5 Tires, 662K mi.

**DUMP TRUCKS - Ring 1**  
**2020 Mack Granite GR64FT Tri-axle Dump Truck**, s/n 1M1GR3GY7LM015769: MP8 505hp Eng., mDrive 12-sp., Camelback Susp., New 16" Roc-Tec Bed, 293K mi.  
**2020 Mack Granite GR64FT Tri-axle Dump Truck**, s/n 1M1GR3GY7LM015769: MP8 505hp Eng., mDrive 12-sp., Camelback Susp., New 16" Roc-Tec Bed, 293K mi.  
**2017 Peterbilt 567 Tandem-axle Dump Truck**, s/n 1XPDP9X4GD320672: Paccar MX13 405hp Eng., 10-sp., 12K Front, 38K Rears, 11R22.5 Tires, Air Ride, 11R22.5 Tires, 16" Dump  
**2009 Kenworth T800 Tri-axle Dump Truck**, s/n 1NKDL40X9J253605: Cummins ISX 450 Eng., 18-sp., 18K Front on 425/65R22.5 Tires, 40K Rears on 11R22.5 Tires, 19" Dump, 421K mi.  
**2007 Kenworth T800 Tri-axle Dump**, s/n J177405

**FUEL & LUBE TRUCKS - Ring 1**  
**2016 Peterbilt PB337 Enclosed Fuel & Lube Truck**, s/n 2NP2HJ7XXGM354706: S/A, Paccar PX9 300hp Diesel Eng., Allison Auto, 11R22.5 Tires, 242K mi.  
**2002 Peterbilt PB330 Fuel & Lube Truck**, s/n 2PNPHD7X02M575657: Cat 3126E Eng., Eaton Fuller Auto, Hyd. Air Compressor, 390K mi.  
**WATER TRUCKS - Ring 1**  
**2007 Mack CXP613 Water Truck**, s/n 1M1A-P02Y77N001808: T/A, Mack MP7 Eng., 10-sp., Front & Rear Discharge, PTO Pump, 19000 GVW, 205K mi.  
**SPECIALTY TRUCKS - Ring 1**  
**2011 Mack GUB13 Roll Off Container Truck**, s/n 1M2AX13C4B0M13062: T/A, Mack MP7-405M Eng., Allison Auto, 11R22.5 Tires, Lowlift CL6022N Roll Off Unit, 684K mi.  
**2015 Ford F350XL Bucket Truck**, s/n 1FDRF-3663FEC14750: Reg. Cab, 6.2L Gas Eng., Auto, Altec AT200Aerial Unit, 30.6' Boom, Insulated Bkt., Tool Boxes, 63K mi.  
**2018 Freightliner Flatbed Truck**, s/n 1FVAG9FE-1JHJ5040: S/A, Rolling Tailboard  
**2016 International Flatbed Truck**, s/n 3HAW-CAAN4GL747403: S/A, Rolling Tailboard  
**2012 International Durastar 4300 Flatbed Truck**, s/n 1HTMMAA8N8X50075: Maxforce Eng., Allison Auto, Gooseneck Bkt., Receiver Hitch, 109K mi.  
**2004 Freightliner M2 Business Class Box Truck**, s/n 1FVACWDC34HN07912: S/A, Cat C7 Eng., Auto, Lift Gate, 357K mi.  
**2017 Kalmar Ottawa T2 Spotter Truck**, s/n 346805: Allison Auto, 295/75R22.5 Fronts, Meter Shows 15347 hrs, 63K mi.  
**1994 Capacity YM5000 Yard Spotter**, s/n 6CTYM-RH50RS247408: S/A, Cummins 6-cyl. Eng., Allison Auto, 30K Rears, Holland 5th Wheel,

70R22.5 Tires, Steel Wheels, 23K mi.  
**2008 Chevy C4500 Bus**, s/n 12009: 8.1L Gas Eng., Auto, 20-passenger, Wheelchair Lift, 165K mi.  
**2009 GMC C4500 Ambulance**, s/n 04385: Duramax Diesel Eng., Auto, Selling Offsite - Located in Headland, AL, 258K mi.  
**TRAILERS - Ring 1**  
**1995 Trail King TK100HDG-493 Lowboy**, s/n 1TKJ049356M022038: 55-ton, 25' Well, 3-axle, Spring Ride, Pony Motor, 118500 GVWR  
**2005 XL Specialized Stretch Lowboy**, s/n 4U3J0482X5L005302: 35-ton  
**2001 Talbert Lowboy**, s/n 40FS0513511020865: Tri-axle, Detach, NGB, 24' Well, 102' Wide, 255/70R22.5 Tires  
**2014 XL Specialized XL90NG Lowboy**, s/n 4U3J04825EL013095: Detach, 50-ton, Flip 3rd Axle, 33' Well  
**2005 Doonan 50' Stepdeck Trailer**, s/n 1D9BGS02851208063: Tri-axle  
**2025 Utility 48' Flatbed Trailer**, s/n 1UYF-S24815A562301: 102' Wide  
**2015 Fontaine Flatbed Trailer**, s/n 13N148200F1566595: Steel Beam, Alum. Deck, T/A, Spread Axle  
**2016 Great Dane 53' Flatbed Trailer**, s/n 1GRD-M9626GH729348: Aluminum, T/A  
**1997 Wilson Pace Setter Hopper Bottom Trailer**, s/n 1W1MCF1W3WA227576: T/A, Tarp, Model DVWH-400  
**1997 T-Brook 39' Dump Trailer**, s/n 1TKFA392X-VG076524: Aluminum, Manual Rollover Tarp, T/A, Air Ride Susp., 11R24.5 Tires, GVWR 80000  
**2001 Travis T102 Dump 39' Trailer**, s/n 48X1F32911001314: Frameless, Manual Rollbar Tarp, T/A, 11R24.5 Tires  
**2012 Aulick Aulimate 42' Live Bottom Trailer**, s/n 1A9TE4227DU341481: 54" Belt, T/A  
**2002 Manac 38' Flatbed Trailer**, s/n

2M512116021082650: Curtain Sides  
**1995 Peerless 42' Chip Trailer**, s/n 1PLE0422X-SPL18083: T/A, Open Top, Model 42-CTS  
**1990 Nabors 42' Chip Trailer**, s/n 0X0922: T/A, Open Top, Model B-754  
**1995 Peerless 42' Chip Trailer**, s/n K18073: T/A, Open Top, Model 42-CTS  
**1991 Peerless 42' Chip Trailer**, s/n 1PLE-04229MPD61450: T/A, Open Top, Model CTS-42  
**1996 Peerless 42' Chip Trailer**, s/n 1PLE04226T-PK20749: T/A, Open Top, Model 42-CTS  
**1988 Peerless 42' Chip Trailer**, s/n 1PLE-04226JPF10490: T/A, Open Top  
**1998 Peerless 42' Chip Trailer**, s/n 1PLE04220W-PM26634: T/A, Open Top, Model 42-CTS  
**1993 Dorsey 42' Chip Trailer**, s/n 10DTV11T-20PA209322: T/A, Open Top  
**1981 Timple Super Hopper Bottom Trailer**, s/n 1TDH42821BA051898: T/A, Tarp  
**2016 Arising 40' Enclosed Gooseneck Trailer**, s/n 5YCGE4029GH031313: 3-axle, Rear Ramp Door  
**24' Flatbed Gooseneck Trailer**: T/A, Harris Welding 25' Tag Trailer: Pintle Hitch, T/A, Dovetail, Ramps, Elec. Brakes, 12K Axles  
**2007 Kaufman Car Hauler**, s/n 15XF-C32217L002553: T/A, 32' Deck  
**Custom Dump Trailer**, s/n 62939: T/A, 12' Long, 90" Wide, Elec. Over Hyd., Dual Cylinders  
**16' Shopbuilt Trailer**: T/A, Metal Grating for Deck, 4 Metal Ramps  
**2006 Big Tex 25DU 16' Gooseneck Dump Trailer**, s/n 16VDX182X62698207: T/A, Spread Axle  
**2001 Eager Beaver 20' Trailer**, s/n 112H8V3291L05889  
**2018 Arising Enclosed Trailers**

Quick Hitch, 6004 hrs  
**John Deere 7510 MFWD Tractor**, s/n RW7510H059972: High Crop, Encl. Cab, Engine Runs, Mixing Water In Oil  
**2000 John Deere 7210 Tractor**, s/n 022574  
**John Deere 6105E MFWD Tractor**, s/n 1P06105ECJ001142: Cab, 3PH, PTO, Drawbar, 2 Hyd Remotes, 5686 hrs  
**John Deere 5500E Tractor**, s/n LV5500E652578: 2WD, Canopy, 4381 hrs (University Owned)  
**John Deere 5425 Tractor**, s/n LV5425T343118: 2wd, Rollbar, PTO, Lift Arms, Drawbar, 2 Hyd Remotes  
**2024 John Deere 5100E MFWD Tractor**, s/n 1P05100ECSR080792: C/A, 3PH, PTO, Drawbar, 3 Hyd Remotes, 34 hrs  
**John Deere 4755 MFWD Tractor**, s/n RW4755P007573: Encl. Cab, 3PH, PTO, 3 Hyd Remotes, Drawbar, Rear Duals  
**John Deere 1023E MFWD Tractor**, s/n 1LV1023EAKK130566: 120R Loader w/ Bkt., 3PH, PTO, w/ JD 54D Autoconnect Belly Mower, 480 hrs  
**John Deere 850 Tractor**, s/n CH0850S008089: 2wd, 3PH, PTO  
**2023 Kubota M7060HD MFWD Tractor**, s/n KBUMFCDRLP8F98238: LA1154A Loader w/ Bkt, Shuttle Shift, 3PH, PTO, Hyd. Remote, Power-train Warranty til 03/27, 594 hrs

**AUCTION INFORMATION**  
 For Sale Information: Donnie W Dean or Tim Harrison at 601-656-9768 or email sold@deancoauction.com  
 Sale Site: 1042 Holland Ave, Philadelphia, MS 39350  
 Hotels: Pearl River Resort, 866-447-3275, Hwy 16 W, Dancing Rabbit Inn, 601-389-6500, Hwy 16 W, Best Western Plus, 601-656-9494, Hwy 16 W, Delta Inn, 601-656-0052, Hwy 15 S, Super Inn, 601-656-3166, Hwy 16 W, Econo Lodge, 601-656-3553, Hwy 16 W, Pearl River RV Park, 601-780-0663, Hwy 16 W  
 Airports: Commercial flights are available to Jackson, MS Intl Airport or Meridian, MS Municipal Airport. Private Aircraft may use Barrett Field - a 3.850 ft. paved strip adjacent to auction site. Call 601-656-9768 for conditions. MS96 - FREQ 123.00  
 Auctioneers: Donnie W Dean, Mississippi Auction Lic. 733; Wes Dean, Mississippi Auction Lic. 1322  
 Terms: All purchases are to be paid for in American funds on sale day by cash or cashiers check. Personal/Company check must be accompanied with a current bank letter of guarantee made to Deanco Auction guaranteeing payment to Deanco Auction. We now accept select credit cards with a 3.5% fee (5.5% for American Express). Credit Card Deposits May Not Be Refunded.  
 Registration Notice: Anyone wishing to bid on items in the auction must register and obtain a bidder's card. Anyone bidding for an account other than their own must register as such.  
 Warranty: Everything is sold "AS IS, WHERE IS" without warranty or guarantee of any sort, written or implied. DO NOT BID unless you have determined the condition of the lot from your own examination. All information was obtained from sources assumed to be correct but is not guaranteed by Deanco Auction.  
 Catalogs: This brochure and the sale-day catalog are furnished by the Auctioneer as a guide only. No guarantee as to the accuracy of description is made.  
 Sales Tax: All sales are subject to Mississippi sales tax unless you have proper re-sale exemption. Any dealer purchasing for resale must execute a Certificate of Resale and present your Sales Tax Permit No. Failure to furnish information will require payment of sales tax.  
 Absentee Bids: Mailed absentee bids will be accepted only if received at least one day prior to sale day. The bid must be accompanied with a certified check or a company/personal check (with a current bank letter of guarantee made to Deanco Auction guaranteeing payment) in the amount of the bid. Failure to adhere to this procedure will nullify the bid. No Telephoned or faxed bids.

**2015 Kenworth Glider**

**2000 John Deere 7210**

**2007 Kenworth T800**

**2018 Peterbilt 389**

**John Deere 4755 MFWD**

**2007 Volvo Tri-axle Heavy Haul: D16 500hp**

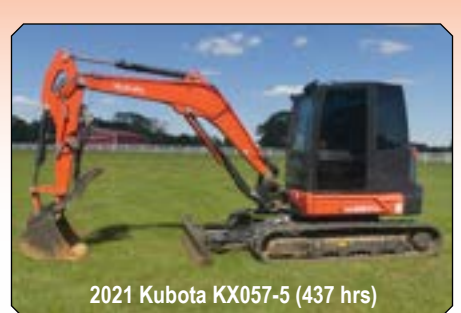
**AUCTION LISTING CONTINUES ON BACK SIDE OF BROCHURE**



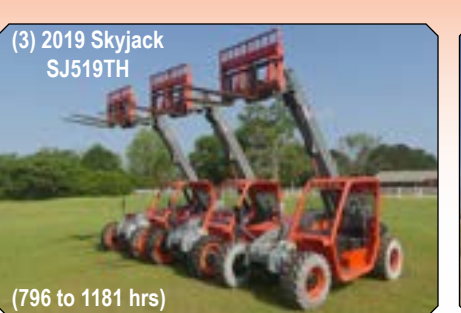
John Deere  
 6105E MFWD



John Deere 410J 4WD



2021 Kubota KX057-5 (437 hrs)



(796 to 1181 hrs)



(2) 2019 John Deere 210G



(2) 2021 Sany SMG200C-8 w/ Ripper



2022 Komatsu PC130-7 (984 hrs)



2018 Cat D5K2 XL



Case 586H



New Holland TS6-110 w/ Alamo Samurahi

# HUGE 1-Day Equip. & Truck Auction - Thurs., May 28<sup>th</sup> 9am

1042 Holland Ave, Philadelphia, Mississippi 39350

Phone: 601-656-9768 Fax: 601-656-0192 www.deancoauction.com



Gyrotrac GT25



2020 Cat 299D3



2023 Kubota L6060 MFWD (693 hrs)

**PLEASE NOTE: Buyers Fee is 10% on the first \$5000 then 3% on the remaining balance of each item.**

2023 Kubota M7060HD MFWD Tractor, s/n KBUMFCDREN8M97519; LA1154A Loader w/ Bkt., Shuttle Shift, 3PH, PTO, Hyd. Remote, Powertrain Warranty till 03/27, 1443 hrs  
Kubota M7060D MFWD Tractor, s/n KBUMFCD-CLM8L92020; C/A, LA1154A Loader w/ Bkt., PTO, 3PH, 2 Hyd Remotes, Drawbar, 588 hrs  
2023 Kubota L6060 MFWD Tractor: C/A, LA1055 Loader w/ Forks, HST, 693 hrs  
n 11676; Diesel, PTO, Hydrostatic Trans., 3PH, 625 hrs  
Kubota L2501 MFWD Tractor, s/n KBUL6D-DRJL8K0326; Rollbar, LA525 Loader w/ QA 66" Bkt., 3PH, PTO, 167 hrs  
Kubota L2350F Tractor, s/n 12383; 2wd, Rollbar, 3PH, PTO, 1438 hrs  
New Holland T7.230 MFWD Tractor, s/n ZFE201230; C/A, Front Lift, 3PH, Front & Rear PTOs, 4 Hyd Remotes, Drawbar, 520/85R42 Rears, 420/85R30 Fronts, 2056 hrs  
New Holland TS6-110 Tractor, s/n NT01095M; Rollbar, Powershuttle, PTO, Drawbar, 2 Hyd Remotes, Alamo Samurahi Hyd. Ditch Bank Mower, 5672 hrs  
2006 New Holland TS110A Tractor, s/n ACP280490; 2wd, Encl. Cab, Dual PTOs, Drawbar, 2 Hyd Remotes, Side Boom Mower, 6887 hrs  
2006 New Holland TS110A Tractor, s/n ACP280586; 2wd, Encl. Cab, Dual PTO, 3PH, 8929 hrs  
New Holland T4.95 MFWD Tractor, s/n ZETJ50877; C/A, 655TL Loader w/ Bkt., 3PH, PTO, Drawbar, 2 Hyd. Remotes, 1619 hrs  
New Holland TL80A MFWD Tractor, s/n HJSD031514; C/A, NH 820TL Loader w/ Hay Spear, 3PH, PTO, 2 Hyd Remotes, 3298 hrs  
New Holland Workmaster 50 MFWD Tractor, s/n NH5390608; NH 621TL Loader w/ Bkt., Coupler, 3PH, 540 PTO, Hyd. Remote, Drawbar, 60 hrs  
New Holland TC45DA MFWD Tractor, s/ 2016 New Holland Boomer 37 MFWD Tractor, s/n 2230012197; C/A, Heat, 250TLA Loader w/ Bkt, 3PH, PTO, Drawbar, 2 Hyd Remotes, 610 hrs  
2018 Massey Ferguson 4707 MFWD Tractor, s/n 5042012; C/A, 931X Loader w/ Bkt., 3PH, PTO, 2 Hyd Remotes, 954 hrs  
Massey Ferguson 1440V MFWD Tractor, s/n M-S1314; Rollbar Canopy, MF1466 Loader w/ Bkt., Shuttle Shift, PTO, Lift Arms, 1043 hrs  
Mahindra 2310 MFWD Tractor, s/n V120186; Rollbar Canopy, Diesel Eng., PTO, 3PH, 940 hrs  
International 274 Tractor, s/n J011012; Diesel Eng., Rollbar Canopy, w/ 4-row Plow and 2-row Plow, 699 hrs  
Minneapolis Moline G705 Tractor, s/n 23601152; 2wd, 6-cyl., Firing Problem, 1438 hrs

**MOTOR GRADERS - Ring 1**  
2021 Sany SMG200C-8 Motor Grader, s/n PY-1120CA0626; C/A, Heat, Cummins Eng., Joystick Controls, 14' Moldboard, Rear Ripper, Push Block, 17.5x25 Tires, County Machine  
2021 Sany SMG200C-8 Motor Grader, s/n PY-1120CA0620; C/A, Heat, Cummins Eng., Joystick Controls, 14' Moldboard, Rear Ripper, Push Block, 17.5x25 Tires, County Machine, 5122 hrs  
Cat 12H Motor Grader, s/n 4XM02608; Encl. Cab, 14' Moldboard, Side Shift, Tip Control, Scarifier, 7016 hrs (County-Owned)

**RUBBER-TIRED LOADERS - Ring 1**  
2006 Cat 928GZ Rubber-tired Loader, s/n DJD02396; Encl. Cab, 100" Hyd, 4-in-1 Bkt., 20.5R25 Tires, Pull Bar, 6330 hrs  
John Deere 524K Rubber-tired Loader, s/n 672278; C/A, GP Bkt., 9567 hrs  
2016 Kawasaki 6727 Rubber-tired Loader, s/n 65J5-5172; C/A, GP Bkt., 20.5x25 Tires, 2333 hrs  
2023 JCB 407 4WD Rubber-tired Loader, s/n 3206972; Canopy, Aux. Hydraulics, Joystick Control, Quick Coupler, 64hp Diesel Eng., Hydrostatic, 1687 hrs

**LOADER BACKHOES - Ring 1**  
Cat 420DIT 4WD Loader Backhoe, s/n BLN02072; Canopy, GP Loader, Hyd. Quick Coupler, 23" Bkt.  
John Deere 410J 4WD Loader Backhoe, s/n 1T0410JXTB0195882; Encl. Cab, 6954 hrs  
2002 John Deere 410G Loader Backhoe, s/n 906607  
2019 John Deere 310L 4WD Loader Backhoe, s/n 1T0310LXPKF357596; Canopy, 4-in-1 Loader, 2213 hrs  
2013 John Deere 310K 4WD Loader Backhoe, s/n 1T0310KXCDG246940  
John Deere 310D Loader Backhoe, s/n T0310DA81454; Canopy, GP Loader, 24" Bkt., Former US Corps of Engineers Machine, 1683 hrs  
JCB 3CX 4WD Loader Backhoe, s/n 907945; C/A, 1523 hrs  
Case 580E 4WD Loader Backhoe, s/n 17483487; 4-in-1 Loader  
New Holland LB75B 4WD Loader Backhoe, s/n 031047346; Encl. Cab, GP Loader, 3607 hrs

**MIDI / MINI EXCAVATORS - Ring 1**  
2017 John Deere 75G Midi Excavator, s/n 1FF-075GXEJ016403; 1323 hrs  
2019 Bobcat E50 Mini Excavator, s/n A/J1816122; Canopy, Aux. Hydraulics, Quick Coupler, Blade, 17" Bkt., Rubber Tracks, 1207 hrs  
2024 Bobcat E48 Mini Excavator, s/n B6EC11323; Canopy, Hyd. Thumb, Blade, Bkt., Rubber Tracks, 738 hrs  
2022 Bobcat E26 Mini Excavator, s/n B4S914045; Canopy, Blade, Hyd. Thumb, Bkt., Rubber Tracks, 796 hrs  
2021 Kubota KX057-5 Mini Excavator, s/n 10471; C/A, Hyd. Thumb, Bkt., Blade, Rubber Tracks, 437 hrs  
2017 Kubota KX057-4 Mini Excavator, s/n 28409; C/A, Heat, Aux. Hydraulics, 23" Bkt., Blade, 5821 hrs  
2013 Komatsu PC35MR-3 Mini Excavator, s/n 19045; Canopy, 24" Bkt., Blade, 4808 hrs  
Volvo ECR88 Midi Excavator, s/n 14045; Canopy, Hyd. Thumb, 30" Bkt.,

**SKID STEER LOADERS - Ring 1**  
2020 Cat 299D3 Skid Steer, s/n DY902664; C/A, GP Bkt., Rubber Tracks, 2487 hrs  
Cat 289D Skid Steer, s/n TAW05681  
Cat 259D Skid Steer, s/n FTL08774  
2023 Kubota SVL97-2 Skid Steer, s/n KB-C2064CVN1H71431; C/A, Rubber Tracks, No Bkt., Warranty till 02/22/27, 2163 hrs  
2016 Bobcat T770 Skid Steer, s/n AT6312668; Encl. Cab, Cool Flow Hyd. System, Rubber Tracks, Grapple Bkt, 2665 hrs  
2018 Bobcat T740 Skid Steer, s/n B3CA14343; Canopy, GP Bkt., Rubber Tracks, 2917 hrs  
Bobcat T740 Skid Steer, s/n B3CA6841; Rubber Tracks  
2024 Bobcat MT100 Stand On Mini Skid Steer, s/n B52P42393; GP Bkt., 697 hrs

**FORESTRY MULCHERS - Ring 1**  
Gyrotrac GT25 Forestry Mulcher, s/n BCT25051080C; Encl. Cab, 92" Mulching Head, 28" Rubber Tracks, 994 hrs

**DIRECTION BORING UNIT - Ring 1**  
2016 Ditch Witch JT9 Directional Drill Boring Machine, s/n CMWJT9XXAG0000269; Deutz Diesel Eng., Rubber Tracks, w/ Full Rack of Rods, 2016

A12135; C/A, Heat, Manual Thumb, 9173 hrs  
2022 Komatsu PC130-7 Excavator, s/n 2371981; Encl. Cab, Screen, Aux. Hydraulics, 34" Bkt., Hyd. Thumb, 20" Metal Tracks, 984 hrs

Subsite TK Electronic Locator, Display, Down Hole Tooling, 500-gallon Tank, Mixing System w/ Honda Eng., 2011 Better Built 22" Trailer, s/n 4MNDP2221B1000882

**ASPHALT EQUIPMENT - Ring 1**  
MAC Strippers Power Mac Jr. Rumble Stripper, s/n PM27011; Diesel Eng., 1127 hrs

**CONCRETE EQUIPMENT - Ring 1**  
2018 Allen AR16 Concrete Buggy, s/n a160218012; Honda Gas Eng.  
Toro 68038 Ultra Buggy Concrete Buggy, s/n 402462750; Honda GX340 11hp Gas Eng.  
Toro 68038 Ultra Buggy Concrete Buggy, s/n 402462743; Honda GX390 Gas Eng.

**COMPACTOR EQUIPMENT - Ring 1**  
2012 Hamm 3410P Vibratory Padfoot Compactor, s/n H1792119; Canopy, Deutz Diesel, 84" Drum, 3807 hrs  
2019 Hamm 12V Compactor, s/n H230-2644; Canopy, 3048 hrs

**SWEEPERS - Ring 1**  
Superior DT80J Sweeper, s/n 812427; Encl. Cab, 1416 hrs  
Superior DT80J Sweeper, s/n 812504; Encl. Cab, 7398 hrs  
Superior DT80J Sweeper, s/n 813664; Encl. Cab, 2255 hrs  
Terramite TSS48 Sweeper, s/n TS0404; Canopy, 3-wheel

**FORKLIFTS - Ring 1**  
2019 Skyjack SJ519TH Telescopic Forklift, s/n 87500040; Canopy, 19' Reach, 5500 lb. Cap., 796 hrs  
2019 Skyjack SJ519TH Telescopic Forklift, s/n 87500059; Canopy, 19' Reach, 5500 lb. Cap., 834 hrs  
2019 Skyjack SJ519TH Telescopic Forklift, s/n 87500083; Canopy, 19' Reach, 5500 lb. Cap., 1181 hrs  
2019 Cat TL1055D Telescopic Forklift, s/n 501683  
2015 Cat TL642C Telescopic Forklift, s/n THG01255; Canopy, 48" Forks, 6600 lb. Cap., 3992 hrs  
JLG 8042 Telescopic Forklift, s/n 0160074488; Encl. Cab, 4063 hrs  
Gehl RS6-34 4WD Telescopic Forklift, s/n DG22808; 4-wheel Steer  
Lull 8K-42 Highlander Telescopic Forklift, s/n 98Y20P2333; 3503 hrs  
2007 Xtreme XRM-0842 Telescopic Forklift, s/n 1XRM0842010790233; Canopy, 13.00-24 Tires  
Pettibone 604 Telescopic Forklift, s/n 6044-117  
JCB 515-40 Telescopic Forklift, s/n 1627587; Canopy, 42" Pallet Forks, 5403 hrs  
Case 588H Rough-Terrain Forklift, s/n HC738634; Canopy, 5000 lb. Cap., 3-stage Mast, Side Shift, Diesel  
Case 586H Rough-Terrain Forklift, s/n HKDC595104; Encl. Cab, Diesel Eng., 3-stage Mast, 46" Forks, 6000 lb. Cap., 19.5L-24 Fronts, 11L-16 Rears, 3360 hrs  
2017 UniCarriers MCP1F2A25LV Forklift, s/n CP1F2-9W24900; Canopy, LP Gas Eng., Side Shift, Fork Positioner, Tilt Carriage, 24033 hrs  
2017 UniCarriers MCP1F2A25LV Forklift, s/n CP1F2-9W24901; Canopy, LP Gas Eng., Side Shift, Fork Positioner, Tilt Carriage, 17679 hrs  
2017 UniCarriers MCP1F2A25LV Forklift, s/n CP1F2-9W24906; Canopy, LP Gas Eng., Side Shift, Fork Positioner, Tilt Carriage, 18797 hrs  
Moffett M50P Piggyback Forklift, s/n L080128; 3-wheel, Side Shift, 5000 lb. Cap., 48" Forks, 2539 hrs

**PERSONNEL LIFTS - Ring 1**  
Skyjack SJ113219 Scissor-type Manlift, s/n 22133518

**1-TON TRUCKS, PICKUPS & VANS - Ring 1**  
2017 Chevy Express Van, s/n 1GCW-GAFF8H1303766; 3-door, V8 4.8L Gas Eng., A/C, 245/75R16 Tires, 118K mi.  
2013 GMC 3500 4WD Flatbed Truck, s/n 1GD-422C80DF212193; Crew Cab, Gooseneck Hitch, 276K mi.  
2009 Ford F250 Pickup, s/n 1FTNX20559EA58582; 2wd, Ext. Cab, 5.4L Gas Eng., Auto, No Tailgate, 121K mi. (Utility-Owned)  
2000 Ford F250 Pickup, s/n 1FTNX20L2Y-EE25760; 2wd, Ext. Cab, Triton V8 5.4L Gas Eng., Auto, 192K mi. (Utility-Owned)  
1997 Ford F250 4WD Pickup, s/n 1FTFF-28W3VND28097; Reg. Cab, 4.6L Gas Eng., Auto, Front Winch, 97K mi. (Utility-Owned)

2008 Nissan Xterra, s/n 5N1AN08U68C504099; 4-door, 2wd, 4.0L V6 Gas Eng., Auto, 221K mi.

**ANTIQUÉ VEHICLES - Ring 1**  
1965 Ford Mustang, s/n F07T802469; 6-cyl. Gas Eng., Auto, Factory A/C, New Tires, New Carpet, New Floor Pan, New Fenders

**WATER CRAFT - Ring 1**  
2007 Honda Aquatrax F12X Jet Ski, s/n HPSA0643F607, 4-stroke, 84 hrs and 2005 Honda Aquatrax F12X Jet Ski, s/n HPSOC2054405, 4-stroke, 97 hrs w/ Tandem-axle Trailer

**UTILITY VEHICLES, CARTS & ATVS - Ring 1**  
IRGC80 Electric Golf Cart, s/n LQ202500690; Canopy, Windshield, 60-volt, Rear Seat, Bluetooth Radio, Backup Camera, Turn Signals, Alum. Wheels, On Board Charger  
IRGC80 Electric Golf Cart, s/n LQ202500974; Canopy, Windshield, 60-volt, Rear Seat, Bluetooth Radio, Backup Camera, Turn Signals, Alum. Wheels, On Board Charger  
2024 John Deere TX4X2 Gator Utility Vehicle, s/n 1M04X2XDCMM162053; 2wd, Gas Eng., Manual Dump Bed, Locking Dif, 1212 hrs  
2024 John Deere TX4X2 Gator Utility Vehicle, s/n 1M04X2XDARM194852; 2wd, Gas Eng., Manual Dump Bed, Locking Dif, 348 hrs  
2024 John Deere TX4X2 Gator Utility Vehicle, s/n 1M04X2XDLPM182117; 2wd, Gas Eng., Manual Dump Bed, Locking Dif, 805 hrs  
2016 Kubota RTV-X1100C 4WD Utility Vehicle, s/n A5KC2GDBCGG028708; Diesel Eng., Encl. Cab, 10K mi., 2052 hrs  
2021 Kubota RTV520-H Utility Vehicle, s/n A5KA1DGAVMG01044; 3006 hrs  
2018 Kubota RTV500 4WD Utility Vehicle, s/n A5KA1CGAEHG04328; Canopy, 2058 hrs  
2021 Polaris Ranger Pro XP 4WD Utility Vehicle, s/n 4XABEP049M8509342; Kubota Diesel Eng., Manual Dump, 3901 mi., 2625 hrs

**MOWERS - Ring 1**  
John Deere Z530M Zero-turn Mower, s/n 1G530MBCNP100386; 48" Cut  
2022 Kubota Z422 Zero-turn Mower, s/n KBG30V-CGOENAGA25635; 54" Deck, Kawasaki FS730V Eng., 331 hrs  
2013 Kubota ZD331P Zero-turn Mower, s/n 33414; Diesel, Canopy, Commercial 60" Deck, 710 hrs  
Kubota Z122RKW Zero-turn Mower, s/n 30575; Kawasaki FT651V Eng., 42" Deck, 182 hrs

**SALVAGE / INOPERABLE ITEMS - Ring 1**  
2017 Ford F250 4WD Pickup, s/n 1FTNF-21L71EB19581 (Inoperable); Reg. Cab, LWB, Bad Fuel Pump, 123K mi. (Utility-Owned)  
2017 Ford Explorer 4WD, s/n 1FM5K8B84H-GD92044 (Inoperable); Wrecked, Airbags Deployed, 64K mi. (Utility-Owned)  
2017 Ford F150 4WD Pickup, s/n 1FTEW1E-57JKC04105 (Inoperable); Wrecked, Frame/Body/Axle Damage, Airbags Deployed, Cranks and Runs, 62K mi. (Utility-Owned)  
1997 Ford F250 Pickup, s/n 2FTFX2760VCA55995 (Inoperable); 2wd, Ext. Cab, 3rd Door, Toolox, Bad Fuel Pump, 219K mi. (Utility-Owned)  
Troybilt TB554 Edger (Salvage)  
Kubota ZD28 Zero-turn Mower (Salvage); Detached Deck, Diesel Eng.  
2020 Jeep Wrangler, s/n 1C4HJXD8LW320295 (Inoperable); Wrecked, Frame & Body Damage, Engine Runs, Transmission Takes Gear (Utility-Owned)  
Kubota KX008-3 Mini Excavator, s/n 15589 (Salvage); Adjustable Width Tracks, Motor Problems  
Cat 950M Rubber-tired Loader, s/n J1S03836 (Salvage); No Bkt., Fire Damaged  
2007 New Holland T6030 Tractor, s/n 278D04835 (Salvage); Fwd, Hyd. Tank, Front Pump w/ Hose, Dual PTO

2015 New Holland TS6 MFWD Tractor, s/n NH05439M (Salvage); Dual PTO, Burned  
Ford 5030 Tractor, s/n 071538B (Salvage); Hydraulics Do Not Work, Bad Oil Leak, Cranks and Drives  
Kubota M8540DT MFWD Tractor, s/n 50213 (Salvage); 3PH, PTO

Every attempt is made to ensure all items in this brochure will be in the auction, however, please call before you come for specific items.

**TRUCKING QUOTES AVAILABLE**  
Scrivner Farms: 601-692-5158  
Freight Mgmt Logistics: 352-303-0561  
Jones Towing & Recovery: 334-355-6060  
B2B Transportation: 941-776-3450  
Journey Logistics: 334-726-3090

**MISCELLANEOUS ITEMS - Ring 2**  
(4) New 40' Storage Containers  
(4) Used 40' Storage Containers  
(8) Used 20' Storage Containers  
(2) Firman 8450-watt Generators  
(4-person Hot Tub w/ Cover, 110V  
(3) Michelin LT275/70R18 Tires: New Dealer Take Offs  
(2) Bridgestone LT275/70R18 Tires: New Dealer Take Offs  
(3) Sets of (4) Pirelli 265/70R17 Tires  
(4) Michelin LT245/75R17 Tires  
500-gallon Fuel Tank  
CM Flatbed: w/ Headache Rack, Lights, Receiver Hitch  
Several Pallets of Rocks  
Lot of (6) Bundles of 6'x2' PVC Conduit  
Land Honor 11x19 Metal Shed

**FARMING RELATED ITEMS - Ring 2**  
Demco RM600 Spray Rig, s/n 00347 w/ 500-gal Tank (Remote in Check In Building); 3PH  
Amadas Rain Reel Traveling Irrigation System, s/n 370810; Model M7A, w/ Gear Box, Gun Cart, 5" Hose, Trailer-mounted  
2017 New Holland ProCart 1022 Hay Rake, s/n YGZSG1320  
Tuffine Disc, s/n 80070; Model TW92422NNL, Hyd. Lift Wheels  
Land Pride RCR1860 5' Rotary Mower, s/n 1228085  
New Holland 853 Round Hay Baler, s/n 732477; w/ Monitor  
Kuhn GMD3150TL Hay Mower, s/n D0569  
Land Pride RCF3096 Cutter, s/n 2245393  
New Agri-X 6' Rotary Mower  
Caprari Pumping Unit, s/n 1417941; PTO-driven, 6" Pipe, Model MEC-DS03/100A  
Great Bend 440 Loader for Tractor: w/ Control, Mounting Brackets, Bumper  
Kubota LA1353S Loader, s/n A0415 w/ Bucket 5' Box Blade  
4' Disc: 12-blade  
Pallet containing 2-row Bottom Plow and Misc. Items for IH 274 Tractor  
8-blade Disc  
60" Finish Mower  
FMC Sidewinder Finishing Mower, s/n 197415  
Push Blade for Tractor  
Tuffine Disc  
10' Cattle Panel

**CONSTRUCTION ATTACHMENTS - Ring 2**  
Fecon Mulching Head Attachment for Skid Steer  
FRD FX45A-CP Breaker Attachment, s/n FX45J1-09185  
24" Bucket w/ Teeth fits Cat 306  
47" Clean Out Bucket for Backhoe  
72" 4-in-1 Bucket  
66" Quick Attach Bucket for Skid Steer  
Kubota 74" Skid Steer Bucket, s/n 1052417A  
Bucket for Skid Steer  
Alo Ab 63" HD Bucket, s/n 00853 w/ Teeth  
Rockland 60" Grapple Bucket  
Rotary Mower Attachment for Skid Steer  
2026 JCT 96" Pusher Box for Skid Steer  
Hensley Excavator Bucket  
Bucket for Rubber-tired Loader  
1.5 cu yd Self-dumping Hopper: Forklift Pockets  
(2) 2 cu yd Self-dumping Hoppers: Forklift Pockets  
2025 I ranch 60cm Buckets  
2025 I ranch 80cm Bucket

2019 Bobcat E50 (1207 hrs)

2019 John Deere 310L 4WD Loader Backhoe (2213 hrs)

2019 John Deere 250G excavator

2019 John Deere 210G excavator

2019 John Deere 210G excavator

2018 Massey Ferguson 4707 MFWD (954 hrs)

2018 Bobcat T740

Kubota L2501 MFWD (167 hrs)

2013 Komatsu PC35MR-3

John Deere 310D (Former USACE Machine)

2019 Komatsu D65PXi-18

JLG 8042

2019 Cat TL1055D

2016 New Holland Boomer 37 MFWD

JCB 3CX 4WD (1523 hrs)

2012 Hamm 3410P

2013 GMC 3500 4WD

Moffett M50P (2539 hrs)

New Holland T4.95 MFWD (1619 hrs)

(3) Superior DT80J

2016 Kawasaki 6727

Amadas Rain Reel

RAIN OR SHINE

2012 John Deere 700K LGP

2016 Komatsu PC210LC-11

(2) 2023 Kubota M7060HD MFWD

2018 Massey Ferguson 4707 MFWD (954 hrs)

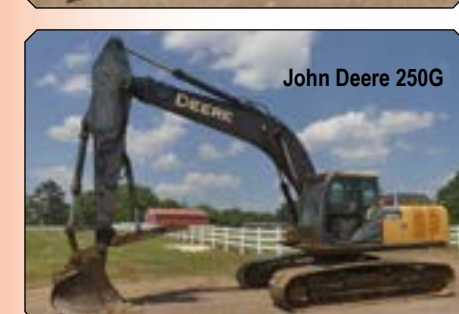
2018 Bobcat T740

2019 Cat TL1055D

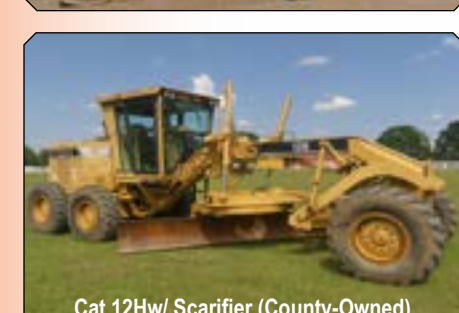
## DRIVE THRU SALE



2019 John Deere 650K XLT



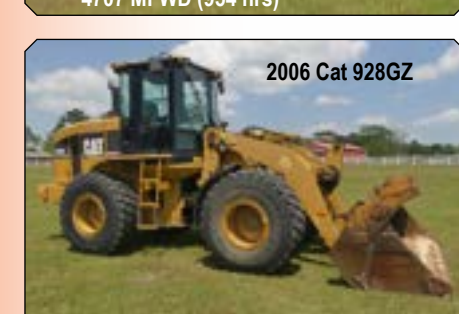
John Deere 250G



Cat 12Hw/ Scarifier (County-Owned)



2018 Massey Ferguson 4707 MFWD (954 hrs)



2006 Cat 928GZ



2018 Bobcat T740

**ORCHARD SPRAYERS - Ring 1**  
2020 GUSS Automated Orchard Sprayer, s/n OG-00249 (Remote in Check In Building); Remote Controlled

**CRAWLER DOZERS - Ring 1**  
2018 Cat D5K2 XL Dozer, s/n KW205405; C/A, 6-way Blade, 9028 hrs  
2012 John Deere 700K LGP Dozer, s/n 222027  
2019 John Deere 650K XLT Dozer, s/n 1T0650K-KLKF361728; C/A, 6-way Blade, 6190 hrs  
2005 John Deere 650J LGP Dozer, s/n T0650JX102517; Canopy, Sweeps, Screens, 6-way Blade, 28" Pads, 12366 hrs  
2019 Komatsu D65PXi-18 Dozer, s/n 91852; Encl. Cab, Intelligent Machine Control, GPS Ready, 6-way Blade, 30" Tracks, Pullbar, 5998 hrs  
2017 Komatsu D39PX-24 Dozer, s/n 95586; C/A, 6-way Blade, 11710 hrs

**HYDRAULIC EXCAVATORS - Ring 1**  
2023 John Deere 160 P-Tier Excavator, s/n 000374; Remaining 5-yr, 3000-hr Extended Warranty, 425 hrs  
John Deere 250G Excavator, s/n 608303; C/A, Hyd. Thumb, 42" Bkt., 8299 hrs  
2014 John Deere 225DLC Excavator, s/n 50145  
2019 John Deere 210G Excavator, s/n 1FF210GX-CJF526829; C/A, Manual Thumb, 4891 hrs  
2019 John Deere 210G Excavator, s/n 1FF210GX-LKF527128; C/A, Manual Thumb; 5262 hrs  
2002 John Deere 160CLC Excavator, s/n 041988  
2016 Komatsu PC210LC-11 Excavator, s/n

2023 John Deere 210G Excavator, s/n 1FF210GX-CJF526829; C/A, Manual Thumb, 4891 hrs

20