



Office Phone: 601-656-9768 Office Fax: 601-656-0192
 www.deancoauction.com
 Email: sold@deancoauction.com



Presorted
 FIRST-CLASS MAIL
 US POSTAGE
 PAID
 Jacksonville, FL
 Permit No. 877

RETURN SERVICE REQUESTED

TIME SENSITIVE MATERIAL
 PLEASE DELIVER ON TIME

HUGE 2-DAY PUBLIC AUCTION

Wed. & Thurs., March 26th & 27th 2025 9am

1042 Holland Ave (Highway 19 South) Philadelphia, Mississippi 39350

LIVE BIDDING
 ONSITE OR ONLINE



2021 Rayco C275 (359 hrs)

24th Annual HUGE Springtime Contractors Equipment & Truck Public Auction

WEDNESDAY, MARCH 26th & THURSDAY MARCH 27th 2025 9am

1042 Holland Ave (Highway 19 South) Philadelphia, Mississippi 39350

LIVE ONSITE AND ONLINE BIDDING - DRIVE-THRU AUCTION HELD RAIN OR SHINE



(2) 2024 Mack GR64F Tri-axle Dump 15K & 16K Miles (County-Owned)

PLEASE NOTE: Buyers premium is 10% on the first \$5000 then 3% on the remaining balance of each item.



2023 Komatsu PC210LCi-11 Intelligent Pkg (86 Hours) w/ Factory Warranty and Komatsu CARE



2022 John Deere 9570R MFWD w/ Warranty (3697 Hours)

2022 Crabtree CS3214 34-Yard Scraper Pan

Open to the public

NAA Auctioneer MAA

For more info call 601-656-9768 or email sold@deancoauction.com



www.DeancoAuction.com

1042 Holland Ave (Hwy 19 S) Philadelphia, MS 39350
 Ph: 601-656-9768 • sold@deancoauction.com

Auctioneers: Donnie W. Dean, MS Lic. 733 & Wes Dean, MS Lic. 1322, MS Gallery Lic. 835F

Deanco LIVE



2018 Peterbilt 389 (16K mi.)



2024 Mack GR64F (County-Owned)



2020 Travis Half-round End Dump



1985 Peterbilt 359



2010 Kenworth W900 w/ Rebuilt Cat C15



2014 International ProStar+ 122, s/n 71494: T/A, Sleeper, Cummins ISX 450 Eng., Deleted, 10-sp., 867K mi.



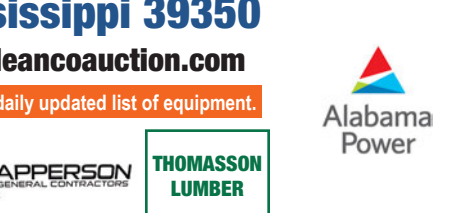
2003 Ford F650



2016 Freightliner Coronado 132 GJider



2023 Reitnouer Conestoga 48' Flatbed w/ Tarpstop Fastrak II Rolling Tarp



2018 Freightliner Coronado Glider



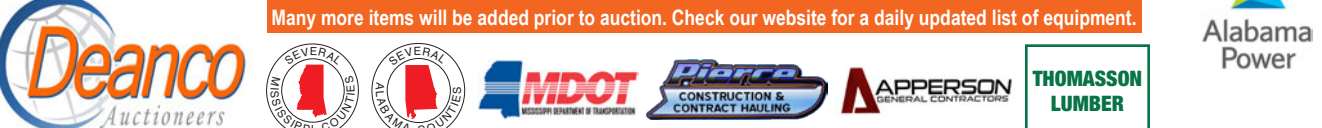
1957 Peterbilt 351



2008 Freightliner M2-112

24th Annual HUGE 2-Day Auction - March 26th & 27th 9am

1042 Holland Ave, Philadelphia, Mississippi 39350
 Phone: 601-656-9768 Fax: 601-656-0192 www.deancoauction.com



DUMP TRUCKS - Day 1 Ring 1
 2024 Mack GR64F Tri-axle, s/n 39757: Mack MP8 455hp Eng., Allison 4500RDS Auto, 20K Front w/ 425/65R22.5 Tires, 46K Rears w/ 11R24.5 Tires, Unused 16' Hard Ox Body Bed, 16K mi. (County-Owned)
 2024 Mack GR64F Tri-axle, s/n 39743: Mack MP8 455hp Eng., Allison 4500RDS Auto, 20K Front w/ 425/65R22.5 Tires, 46K Rears w/ 11R24.5 Tires, Unused 16' Hard Ox Body Bed, 15K mi. (County-Owned)
 2008 Freightliner M2-112 Tri-axle, s/n B1747: Mercedes 450hp Eng., 8LL, 18K Front w/ 425/65R22.5 Tires, 46K Rears w/ 11R24.5 Tires, Eng. Brake, Full Lockers, 16' Dump Body, 385K mi.
 2007 Mack CT713 Tandem-axle, s/n 06859: Diesel, Maxitorque 10-sp., Camelback Susp., Ox Bodies 16' 15-17 Yard Bed, Tarp
 2003 Ford F650 Single-axle, s/n 03997: Cat Eng., Warren 5/6 yard Bed, 270K mi.

ANTIQUE TRUCKS - Day 1 Ring 1
 1985 Peterbilt 359 Truck, s/n 1XP9009X5FN185685: T/A, Day Cab, Cat V8 Eng., 15-sp., Air Track, Wet Kit, 24.5 Alum. Wheels, Sliding 5th Wheel
 1957 Peterbilt 351 Truck, s/n L4018 (No Title - Bill of Sale Only): T/A, 36' Flat Top Sleeper, V-Model Cat, 15-sp., Air Track, 24.5 Alum. Wheels, Full Rear Fenders, Sliding 5th Wheel, Wet Kit
TRUCK TRACTORS - Day 1 Ring 1
 2019 Volvo VNL, s/n 98940
 2018 Peterbilt 389, s/n 62340: T/A, Sleeper, Cummins Eng., 18-sp., 11R22.5 Tires, 819K mi.
 2018 Freightliner Cascadia 125, s/n K0422: T/A, Day Cab, Detroit DD15 455hp Eng., DT12 Auto, 12K Front, 40K Rears, Sliding 5th Wheel, A/C, 738K mi.
 2018 Freightliner Coronado 132, s/n R5386: Glidered, T/A, Sleeper, Detroit Diesel Eng., 1226K mi.
 2015 Kenworth, s/n 59343: T/A, Day Cab, Paccar Eng., 13-sp., DEF System, Stretched Frame, 285/75R24.5 Tires, 635K mi.
 2015 Freightliner Coronada, s/n L5951: Glidered, T/A, Mid Roof Sleeper, Detroit 60 Series Eng., 13-sp., 295/75R22.5 Tires, 1197K mi.
 2017 Volvo VNL, s/n 83011: T/A, Day Cab, Volvo D13 425hp Eng., I-shift Auto, 12K Front, 38K Rears, 445/50R22.5 Super Single Rears, 682K mi.
 2016 Freightliner Coronado 132, s/n R5386: Glidered, T/A, Sleeper, Detroit Diesel Eng., 1226K mi.
 2015 Kenworth, s/n 59343: T/A, Day Cab, Paccar Eng., 13-sp., DEF System, Stretched Frame, 285/75R24.5 Tires, 635K mi.
 2015 Freightliner Coronada, s/n L5951: Glidered, T/A, Mid Roof Sleeper, Detroit 60 Series Eng., 13-sp., 295/75R22.5 Tires, 1197K mi.
 2017 Volvo VNL, s/n 83011: T/A, Day Cab, Volvo D13 425hp Eng., I-shift Auto, 12K Front, 38K Rears, 445/50R22.5 Super Single Rears, 682K mi.
 2016 Freightliner Coronado 132, s/n R5386: Glidered, T/A, Sleeper, Detroit Diesel Eng., 1226K mi.
 2015 Kenworth, s/n 59343: T/A, Day Cab, Paccar Eng., 13-sp., DEF System, Stretched Frame, 285/75R24.5 Tires, 635K mi.
 2015 Freightliner Coronada, s/n L5951: Glidered, T/A, Mid Roof Sleeper, Detroit 60 Series Eng., 13-sp., 295/75R22.5 Tires, 1197K mi.

2014 International ProStar+ 122, s/n 71494: T/A, Sleeper, Cummins ISX 450 Eng., Deleted, 10-sp., 867K mi.
2014 International ProStar+, s/n 36886: T/A, Day Cab, 10-sp., Air Ride Susp.
2014 International ProStar+, s/n 36900: T/A, Day Cab, 10-sp., Air Ride Susp.
2014 International ProStar+, s/n 36912: T/A, Day Cab, 10-sp., Air Ride Susp.
2013 Mack CHU613, s/n 12366: T/A, Day Cab, Mack MP8 445hp Eng., 10-sp., Air Ride Susp., 12K Front, 40K Rears, 210" WB, Wet Kit, 11R24.5 Tires, 503K mi.
2010 Kenworth W900, s/n 67541: T/A, Day Cab, Ext. Cab, Cat C15 600hp Eng., Gold Kit Rebuilt @ 697K mi. in Jan 2021, Single Turbo, Glidered, No Emissions, Fuller Super 18-sp., 13.2K Front, 40K Rears, 224" WB, 3.90 Ratio, Diamond Cab Interior, 11R24.5 Tires, 848K mi.
2009 Freightliner Coronado, s/n K1944: T/A, Day Cab, Cat C15 475hp Eng., Eaton Fuller Auto Shift, 14320 Front, 40K Rears, Alum. Wheels, 11R24.5 Tires, Dual Exhaust, Alum. Headache Rack, Full Lockers, 1087 hrs, 20K mi.
2007 Peterbilt 379, s/n 42736: T/A, Day Cab, Cat C15 Acert Eng., 18-sp., 13.2K Front, 46K Rears, 11R24.5 Tires, 778K mi.

TRUCKS - Day 1 Ring 1
 2023 Fontaine Magnitude 55L Plus Lowboy, s/n 57JE5230XP35A1496: 3-axle, 55-ton, Pony Motor, 275/70R22.5 Tires, 134000 lb. GVWR
 1997 Specialized XL100HDG Lowboy, s/n 4U3J05302VL031385: 50-ton, RGN, 25' Well, 102" Wide, Non-ground Bearing, 3-axle, Covered Wheel Wells, 257/70R22.5 Tires
 2001 Witco Challenger RG50 Lowboy, s/n 1W8A11E371S000214: 3-axle, 23' Well, 101" Wide, Covered Wheel Well, 10.00-20 Tires, Ground Bearing
 2005 Fontana Step Deck Trailer, s/n 13N24830351525865
 2006 Trail-Eze TE80HT48 Lowboy, s/n 1DA72C7928C017727: T/A, 48' Length, 102" Wide, Hyd. Folding Dovetail, Hyd. Motor Grader Ramps, 235/75R17.5 Tires
 2008 Terex Loading Step Deck Trailer, s/n 5LKL4823281027277: T/A, Hyd. Tail, Winch

2019 Wink R-4048 40' End Dump Trailer, s/n 1W95D4020K612003: T/A, 11R24.5 Tires, 68000 lb. GVWR
2015 Vantage T-91-SS Dump Trailer, s/n 4E7AA-3929FATA5011: T/A, 11R24.5 Tires, 68000 lb. GVWR
1994 RS 39' Dump Trailer, s/n 1R9D39209R0011002: Aluminum, T/A, Barn Door
2020 Travis Half-round End Dump Trailer, s/n 4T91A2322LA086008: Heavy-duty Air Ride
2023 Reitnouer Conestoga 48' Flatbed Trailer, s/n 1RNF48A23PR058233: T/A, Tarpstop Fastrak II Rolling Tarp System, 102" Wide, Spread Axle, Tool Boxes, LED Lights, 2-sp. Landing Gear, 90000 GVWR
Trailer: S/A, Tailgate
Butler Reel Trailer, s/n 897028: S/A, Pintle Hitch
T & T Reel Trailer, s/n 1B9P50910PM274037: S/A, Pintle Hitch, Tool Box
21' Gooseneck Trailer: T/A, Single Wheels, Round Pipe Sides, Cattle Panel Sides
(15) Unused 2025 Triple R 6x12 Utility Trailers: S/A, Bumper-pull, Ramp
2018 Wabash Trailer, s/n 1JUV532B6JL083447
2018 PJ 30' Gooseneck Trailer, s/n 4P5LD302XJ1286865: T/A, Duals, Dovetail, Ramps
Shopbuilt 6x12 Trailer

2017 Ford F250 Pickup, s/n 78150: Ext. Cab, 6.2L Gas Eng., Auto, Knapeide Utility-body, Pipe Rack, 251K mi.
2015 GMC Sierra, s/n 22292: 2wd, Reg. Cab, 5.3L Gas Eng., Auto, LWB, 168K mi.
2015 Ford F150, s/n 69288: 2wd, 235K mi.
2013 Chevy 2500, s/n 55122: 4-door, Duramax
2013 Ford F250 4WD, s/n 19381: 183K mi.
2012 Ford F250 4W, s/n 70290: 173K mi.
2008 Ford F550 Flatbed, s/n 23930: 4-door, Powerstroke V8 Turbo Diesel Eng., Auto, 22.5 Alum. Wheels, 217K mi
2008 Ford F450, s/n 66158: Crew Cab, 2wd, 6.8L Triton V10 Eng., Auto, Dump Bed, 93K mi.
2006 Chevy 1500 4WD, s/n 60894: 4-door
2006 Chevy 2500 4WD, s/n 11330: Diesel, 4-door
2002 Dodge Ram 3500 4WD, s/n 58140: Ext. Cab, V10 Eng., Auto, 94K mi.
1996 Ford F250XL 4WD, s/n 30699: 5.8L Gas Eng., Auto, LWB, Custom Wheels, 94K mi.

WATERCRAFT - Day 1 Ring 1
 1997 Lowe Pontoon Boat, s/n OMLC789PC797 w/ Trailer: Johnson 50 Eng., Trolling Motor
 1994 Charger Foxfire 195TF Bass Boat, s/n DA0899A4494 w/ Trailer: Mercury 200 2.5L Xri Eng., Trolling Motor
 2007 Honda Aquatrax F-12X Jet Ski, s/n HPSA0643F607: Turbo 4-stroke Eng.
 2005 Honda Aquatrax R-12X Jet Ski, s/n HPSC205441405: Turbo 4-stroke Eng.
 Tandem Jetski Trailer: T/A

AUCTION INFORMATION
 For Sale Information: Donnie W Dean or Tim Harrison at 601-656-9768 or email sold@deancoauction.com
 Sale Site: 1042 Holland Ave, Philadelphia, MS 39350
 Hotels: Pearl River Resort, 866-447-3275, Hwy 16 W. Dancing Rabbit Inn, 601-389-6500, Hwy 16 W. Best Western Plus, 601-656-9494, Hwy 16 W. Delta Inn, 601-656-0252, Hwy 15 S. Super Inn, 601-656-3166, Hwy 16 W. Econo Lodge, 601-656-3553, Hwy 16 W. Pearl River RV Park, 601-780-0663, Hwy 16 W.
 Airports: Commercial flights are available to Jackson, MS Intl Airport or Meridian, MS Municipal Airport. Private Aircraft may use Barrett Field - a 3.850 ft. paved strip adjacent to auction site. Call 601-656-9768 for conditions. MS96 - FREQ 123.00
 Auctioneers: Donnie W Dean, Mississippi Auction Lic. 733; Wes Dean, Mississippi Auction Lic. 1322
 Terms: All purchases are to be paid for in American funds on sale day by cash or cashier's check. Personal/Company check must be accompanied with a current bank letter of guarantee made to Deanco Auction guaranteeing payment to Deanco Auction. We do not accept credit cards with a 3.5% fee (5.5% for American Express). Credit Card Deposits May Not Be Refunded.
 Registration Notice: Anyone wishing to bid on items in the auction must register and obtain a bidder's card. Anyone bidding for an account other than their own must register as such.
 Warranty: Everything is sold "AS IS, WHERE IS" without warranty or guarantee of any sort, written or implied. DO NOT BID unless you have determined the condition of the lot from your own examination. All information was obtained from sources assumed to be correct but is not guaranteed by Deanco Auction
 Catalogs: This brochure and the sale-day catalog are furnished by the Auctioneer as a guide only. No guarantee as to the accuracy of description is made.
 Sales Tax: All sales are subject to Mississippi sales tax unless you have proper re-sale exemption. Any dealer purchasing for resale must execute a Certificate of Resale and present your Sales Tax Permit No. Failure to furnish information will require payment of sales tax.
 Absentee Bids: Mailed absentee bids will be accepted only if received at least one day prior to sale day. The bid must be accompanied with a certified check or a company/personal check (with a current bank letter of guarantee made to Deanco Auction guaranteeing payment) in the amount of the bid. Failure to adhere to this procedure will nullify the bid. No telephoned or faxed bids.

2012 International Durastar (108K mi.)
21x60 Office Trailer
2007 Peterbilt 379

2023 Fontaine Magnitude 55L Plus
2024 Mack GR64F
2023 Reitnouer Conestoga 48' Flatbed
2018 Freightliner Coronado
2016 Freightliner Coronado
2015 Kenworth
2014 International ProStar+
2013 Mack CHU613
2010 Kenworth W900
2003 Ford F650
2016 Freightliner Coronado 132 GJider
2023 Reitnouer Conestoga 48' Flatbed w/ Tarpstop Fastrak II Rolling Tarp
2018 Freightliner Coronado Glider
1957 Peterbilt 351
2008 Freightliner M2-112

2019 Wink R-4048 40' End Dump Trailer
2015 Vantage T-91-SS Dump Trailer
1994 RS 39' Dump Trailer
2020 Travis Half-round End Dump Trailer
2023 Reitnouer Conestoga 48' Flatbed Trailer
Trailer: S/A, Tailgate
Butler Reel Trailer
T & T Reel Trailer
21' Gooseneck Trailer
(15) Unused 2025 Triple R 6x12 Utility Trailers
2018 Wabash Trailer
2018 PJ 30' Gooseneck Trailer
Shopbuilt 6x12 Trailer

2017 Ford F250 Pickup
2015 GMC Sierra
2015 Ford F150
2013 Chevy 2500
2013 Ford F250 4WD
2012 Ford F250 4W
2008 Ford F550 Flatbed
2008 Ford F450
2006 Chevy 1500 4WD
2006 Chevy 2500 4WD
2002 Dodge Ram 3500 4WD
1996 Ford F250XL 4WD

WATERCRAFT - Day 1 Ring 1
1997 Lowe Pontoon Boat
1994 Charger Foxfire 195TF Bass Boat
2007 Honda Aquatrax F-12X Jet Ski
2005 Honda Aquatrax R-12X Jet Ski
UTILITY VEHICLES, CARTS & ATVS - Day 1 Ring 1
Kubota RTV900 4WD Utility Vehicle
2003 Harley Davidson 100th Anniversary V-Rod (4K mi.)
1950 Pontiac Silver Streak Convertible

2024 Mack GR64F
2023 Reitnouer Conestoga 48' Flatbed
2018 Freightliner Coronado
2016 Freightliner Coronado
2015 Kenworth
2014 International ProStar+
2013 Mack CHU613
2010 Kenworth W900
2003 Ford F650
2016 Freightliner Coronado 132 GJider
2023 Reitnouer Conestoga 48' Flatbed w/ Tarpstop Fastrak II Rolling Tarp
2018 Freightliner Coronado Glider
1957 Peterbilt 351
2008 Freightliner M2-112
2019 Wink R-4048 40' End Dump



(2) 2020-18 Jarraff Geoboy Mulchers w/ Fecon BH120H2 (Utility-owned)



2022 Crabtree CS3214 34-Yard Scraper



2021 John Deere 9570R MFWD w/ Warranty (3697 hrs)



2018 Komatsu PC210LC-11 w/ Intelligent Pkg



(3) 2013-2017 John Deere 6175R MFWD



Roadtec SB2500E Shuttle Buggy



2008 Cat D6N LGP



2014 John Deere 6140M MFWD



(2) 2019-18 Hydrema 912HM

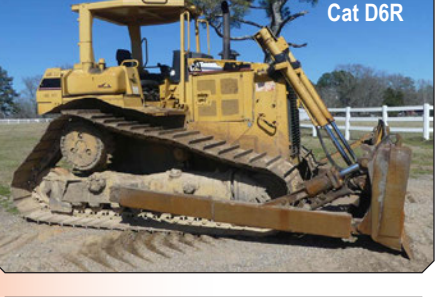
24th Annual HUGE 2-Day Auction - March 26th & 27th 9am

1042 Holland Ave, Philadelphia, Mississippi 39350

Phone: 601-656-9768 Fax: 601-656-0192 www.deancoauction.com



Many more items will be added prior to auction. Check our website for a daily updated list of equipment.



Cat D6R

PLEASE NOTE: Buyers Fee is 10% on the first \$5000 then 3% on the remaining balance of each item.

Kubota RTV900 4WD Utility Vehicle, s/n KRT-V900A81097451: Diesel Eng., Hyd. Bed, Windshield, 1284 hrs

2018 Club Car CarryAll 1500 4WD Utility Cart, s/n 858131: Kubota Diesel, Dump Bed, Hitch, 1876 hrs

2018 Club Car CarryAll 300 Utility Cart, s/n 894546: Gas Eng., Dump Bed, Hitch, 952 hrs

MOWERS - Day 1 Ring 1
2015 Kubota ZX26S Zero-turn, s/n 73374: 26hp Diesel Eng., 60" Deck, 634 hrs

2016 Kubota ZD1211 Zero-turn, s/n 11375: 26hp Diesel Eng., 60" Deck, 566 hrs

CAMPERS & OFFICE TRAILERS - Day 1 Ring 2
(2) 2006 Belair Campers: T/A, Bumper-pull 12x60 Office Trailer

12x54 Office Trailer
Water Tank w/ Water Truck
2006 Ateck Utility Body, s/n 37-4276440

SALVAGE / INOPERABLE ITEMS - Day 1 Ring 2
2017 Volvo Truck Tractor, s/n 4V4NC9EH8HN93013: T/A, Day Cab, Volvo D13 425hp Eng., Auto.

2016 International 4600 Flatbed Truck, s/n 1HTSAZ-RNMXH362923: S/A, Auto, Water Tank w/ Pump, 127K mi.

1995 Ford Flatbed Truck, s/n 1FDWF80CXVA18105: S/A, 6-sp., Water Tank w/ Pump, 120K mi.

2007 GMC Cab & Chassis, s/n 1GDUJ01307F901981: No Transmission

1991 International 4600 Flatbed Truck, s/n 1HTSAZ-RNMXH362923: S/A, Auto, Water Tank w/ Pump, 127K mi.

2000 Peterbilt 379 Cab & Chassis, s/n 1XP-5DR9X3YD497126: T/A, Day Cab, 15-sp.

2000 Mack CH613 Fuel & Lube Truck, s/n 1M1AA12Y9YV125260: T/A, 10-sp., Air Compressor, Product Tanks, Hose Reels, 201K mi.

2008 International 7300 Asphalt Distributor Truck, s/n 1HTZ4AN28J653533: S/A, Eaton 6-sp., Etnyre BlackTopper Centennial Unit

1997 Honda Foreman 400 4WD ATV
Tennant T5 Floor Scrubber, s/n 10468843

MISCELLANEOUS ITEMS - Day 1 Ring 2
(5) Used 40' Insulated Shipping Containers: Cooling Units are Non-functional

(4) Sets of (4) Michelin 445/95R25 Tires
(2) 205/75D15 Tires
Set of (4) Michelin 455/55R22.5 Tires and Rims

Generac 4000-watt Generator
Aluminum Headache Rack: Storage Boxes
Lincoln Arc Welder

Northstar Pressure Washer
(2) Manual Jacks
Better Built Aluminum Tool Box

(4) 18" Inflatable Water Slides
(3) 22" Inflatable Water Slides
(2) Inflatable Obstacle Courses
18" Inflatable Water Slide
(7) Inflatable Beach Hoses
(1) Blowers

CRAWLER DOZERS - Day 2 Ring 1
Cat D6R, s/n ADE00256: Canopy, St. Blade w/ Tilt, 14505 hrs

2008 Cat D6N LGP, s/n DJY00913: C/A, 6-way Blade, 9080 hrs

2012 Cat D6K LGP, s/n DHA002292: Encl. Cab, 6-way Blade, Pull Bar, 12390 hrs

1991 Cat D3C LGP, s/n 5CJ00201: 4-post Canopy, 6-way Blade, Pyramid Pads, Right Truck Issue, 9668 hrs

John Deere 850J WH, s/n 174440: C/A, 10' Blade, 24" Tracks, 18926 hrs

2013 John Deere 650K XLT, s/n 239887: Canopy, 6-way Blade, 8696 hrs

CRAWLER LOADERS - Day 2 Ring 1
Fiat Allis FL10E, s/n 090214: 4-post Canopy, GP Bkt., 6629 hrs

HYDRAULIC EXCAVATORS - Day 2 Ring 1
2017 Komatsu PC360LC-11, s/n A36052

2023 Komatsu PC210LC-11, s/n 506184: C/A, Escal 48" Bkt., Intelligent Machine Control 2.0, 86 hrs

2018 Komatsu PC210LC-11, s/n 500537 (Monitor in Check in Building): C/A, Intelligent Machine Control, 4905 hrs

1994 Komatsu PC200LC-6, s/n A80252: C/A, 12615 hrs

2020 Cat 313FLGC, s/n ZGS00201: C/A, Dual Aux. Hydraulics, Hyd. Thumb, 1960 hrs

2015 Sany SY215C-LC, s/n DP2828: C/A, Manual Thumb, 1536 hrs

John Deere 200C, s/n 504261: C/A, 6996 hrs

John Deere 135D, s/n 302247

2015 John Deere 130G, s/n 40902: C/A, 36" Bkt., 4778 hrs

Kobelco SK260SRLC-3, s/n YU07-04207: Encl. Cab, 31.5" Tracks, 36" Grapple, 17078 hrs

Kobelco SK200LC-3, s/n YQ-02920: Cab, 50" Reach, 42" Bkt., 2859 hrs



John Deere 5100E MFWD



2021 Terramac RT9 (1120 hrs)



New Holland Powerstar 100 MFWD



Bobcat L28 (200 hrs)



Kubota L4760D MFWD



2013 John Deere 650K XLT



Kubota L3301D MFWD (703 hrs)



2017 Case 586H



Kubota BX2370 MFWD (89 hrs)



2017 JCB 3CX 4WD Extendahoe

2007 GMC Cab & Chassis, s/n 1GDUJ01307F901981: No Transmission

1991 International 4600 Flatbed Truck, s/n 1HTSAZ-RNMXH362923: S/A, Auto, Water Tank w/ Pump, 127K mi.

1995 Ford Flatbed Truck, s/n 1FDWF80CXVA18105: S/A, 6-sp., Water Tank w/ Pump, 120K mi.

2000 Peterbilt 379 Cab & Chassis, s/n 1XP-5DR9X3YD497126: T/A, Day Cab, 15-sp.

2000 Mack CH613 Fuel & Lube Truck, s/n 1M1AA12Y9YV125260: T/A, 10-sp., Air Compressor, Product Tanks, Hose Reels, 201K mi.

2008 International 7300 Asphalt Distributor Truck, s/n 1HTZ4AN28J653533: S/A, Eaton 6-sp., Etnyre BlackTopper Centennial Unit

1997 Honda Foreman 400 4WD ATV
Tennant T5 Floor Scrubber, s/n 10468843

MISCELLANEOUS ITEMS - Day 1 Ring 2
(5) Used 40' Insulated Shipping Containers: Cooling Units are Non-functional

(4) Sets of (4) Michelin 445/95R25 Tires
(2) 205/75D15 Tires
Set of (4) Michelin 455/55R22.5 Tires and Rims

Generac 4000-watt Generator
Aluminum Headache Rack: Storage Boxes
Lincoln Arc Welder

Northstar Pressure Washer
(2) Manual Jacks
Better Built Aluminum Tool Box

(4) 18" Inflatable Water Slides
(3) 22" Inflatable Water Slides
(2) Inflatable Obstacle Courses
18" Inflatable Water Slide
(7) Inflatable Beach Hoses
(1) Blowers

CRAWLER DOZERS - Day 2 Ring 1
Cat D6R, s/n ADE00256: Canopy, St. Blade w/ Tilt, 14505 hrs

2008 Cat D6N LGP, s/n DJY00913: C/A, 6-way Blade, 9080 hrs

2012 Cat D6K LGP, s/n DHA002292: Encl. Cab, 6-way Blade, Pull Bar, 12390 hrs

1991 Cat D3C LGP, s/n 5CJ00201: 4-post Canopy, 6-way Blade, Pyramid Pads, Right Truck Issue, 9668 hrs

John Deere 850J WH, s/n 174440: C/A, 10' Blade, 24" Tracks, 18926 hrs

2013 John Deere 650K XLT, s/n 239887: Canopy, 6-way Blade, 8696 hrs

CRAWLER LOADERS - Day 2 Ring 1
Fiat Allis FL10E, s/n 090214: 4-post Canopy, GP Bkt., 6629 hrs

HYDRAULIC EXCAVATORS - Day 2 Ring 1
2017 Komatsu PC360LC-11, s/n A36052

2023 Komatsu PC210LC-11, s/n 506184: C/A, Escal 48" Bkt., Intelligent Machine Control 2.0, 86 hrs

2018 Komatsu PC210LC-11, s/n 500537 (Monitor in Check in Building): C/A, Intelligent Machine Control, 4905 hrs

1994 Komatsu PC200LC-6, s/n A80252: C/A, 12615 hrs

2020 Cat 313FLGC, s/n ZGS00201: C/A, Dual Aux. Hydraulics, Hyd. Thumb, 1960 hrs

2015 Sany SY215C-LC, s/n DP2828: C/A, Manual Thumb, 1536 hrs

John Deere 200C, s/n 504261: C/A, 6996 hrs

John Deere 135D, s/n 302247

2015 John Deere 130G, s/n 40902: C/A, 36" Bkt., 4778 hrs

Kobelco SK260SRLC-3, s/n YU07-04207: Encl. Cab, 31.5" Tracks, 36" Grapple, 17078 hrs

Kobelco SK200LC-3, s/n YQ-02920: Cab, 50" Reach, 42" Bkt., 2859 hrs

MOTOR GRADERS - Day 2 Ring 1
Champion 710A Motor Grader, s/n 157-553-18942-88: Cab, Tip Control, Hyd. Side Shift, No Brakes, Clutch Problem

TRACTORS & PANS - Day 2 Ring 1
2013 John Deere 9560R MFWD, s/n 1RW9560RDP-DP010359: Articulating, C/A, Fomt & Rear 800/70R38 Duals, Straight Power Shift, 6881 hrs

2021 John Deere 9570R MFWD, s/n 1RW9570RLME066960: Articulating, C/A, 710/70R42 Tires, Warranty until 5000 hrs, 3697 hrs

2013 John Deere 9560R MFWD, s/n 1RW9560RDP-DP010359: Articulating, C/A, Fomt & Rear 800/70R38 Duals, Straight Power Shift, 6881 hrs

2021 John Deere 9570R MFWD, s/n 1RW9570RLME066960: Articulating, C/A, 710/70R42 Tires, Warranty until 5000 hrs, 3697 hrs

Crabtree CS3214 34-Yard Scraper Pan, s/n 7024

RUBBER-TIRED LOADERS - Day 2 Ring 1
2015 John Deere WA380-8, s/n A74579: C/A, Log Forks w/ Top Clamp, 14620 hrs

2012 Komatsu WA250-6, s/n 76971: C/A, GP Bkt., 20.5R25 Tires, 13624 hrs

2010 Case 821E, s/n NAHE04014: Encl. Cab, GP Bkt., 23.5R25 Tires, Backup Camera

2015 John Deere 244J, s/n 8037051: C/A Bobcat L28: Grapple Bkt., 200 hrs

Kubota R520ST, s/n 21068: Rollbar Canopy, GP Bkt. Unused 2024 AGT KRW23, s/n 1225596: 23hp Gas Eng., Bkt.

Unused 2024 AGT SDA-140W, s/n 12119: 15hp Gas, Bkt.

Unused 2024 AFT KRW23, s/n 225592: 23hp Gas Eng., Bkt.

Unused 2024 AGT SDA-140W, s/n 12114: 15hp Gas, Bkt.

LOADER BACKHOES - Day 2 Ring 1
2017 JCB 3CX 4WD Extendahoe, s/n 2514828: Canopy, Windshield, GP Loader, 1074 hrs

JCB 2CX-12-4WS 4WD, s/n H01708623: Canopy, GP Loader w/ Forks, 7013 hrs

2019 John Deere 310E 4WD, s/n 880267: 4-post Canopy, GP Loader w/ Forks, 7013 hrs

Komatsu WB142, s/n A13128: 3188 hrs

MIDI / MINI EXCAVATORS - Day 2 Ring 1
2022 Bobcat E88, s/n B4NM11390: C/A, Hyd. Thumb, Rubber Tracks, Blade, 1165 hrs

2021 Bobcat E88, s/n B4NM11124: C/A, Hyd. Thumb, Rubber Tracks, Blade, 929 hrs

2022 Bobcat E60R2, s/n B4GR13565: C/A, Blade, Hyd. Thumb, 410 hrs

2017 Bobcat E50, s/n AJ1813485: Canopy, Blade, Rubber Tracks

2021 Bobcat E42, s/n B4GM12369: C/A, Rubber Tracks, Blade, 4208 hrs

2019 Bobcat E42, s/n B2VW15632: 4-post Canopy, Blade, Rubber Tracks, 1953 hrs

2017 Bobcat 418, s/n B39212459: Rollbar, Rubber Tracks, Blade, 328 hrs

2014 Hitachi ZX75US-3, s/n 063235: C/A, 5070 hrs

2017 JCB 8029CTS, s/n H2315255: 4-post Canopy, Rubber Tracks, Blade, Plumbed, 1511 hrs

2016 Cat 304E2CR, s/n ME401339: C/A, Rubber Tracks, Hyd. Thumb, Blade, 2116 hrs

2005 Cat 303CR, s/n DMA030380: Canopy, Blade, Rubber Tracks, 2806 hrs

2008 Cat 301.8C, s/n JSB03212: 4-post Canopy, Rubber Tracks, Blade, Plumbed

Sunward SWE35UF: C/A, Heat, Quick Attach Bkt. w/ Extra Bkt. 353 hrs

(2) Unused 2024 AGT H15R: 420cc Gas Eng., 15" Bkt., 6" Wide Tracks

(2) Unused 2024 AGT QK16R: 15hp Gas Eng., Bkt., Hyd. Thumb, Blade

Unused 2024 AGT QNT30: 25hp Diesel Eng., Bkt. Unused 2024 AGT MY50R: 29hp Gas Eng., Bkt.

Unused 2024 AGT LRT23: 23hp Gas Eng., Bkt. Unused 2024 AGT QR12R: 420cc Gas Eng., 14" Bkt., 6" Tracks

Unused 2024 AGT QH13R: 420cc Gas Eng., 14" Bkt., 6" Tracks

Unused 2024 AGT QK18RXS-C: 15hp Gas Eng., C/A, Pilot System, Hyd. Thumb, Blade

(2) Unused 2024 AGT H12R: 15hp Gas Eng., Bkt. (2) Unused 2024 AGT H15R: 15hp Gas Eng., Bkt.

SKID STEER LOADERS - Day 2 Ring 1
2023 Bobcat T76, s/n B4CE27915: C/A, Rubber Tracks, GP Bkt., Hyd. QC, Aux. Hydraulics, 753 hrs

2022 Bobcat T66, s/n B4SB21565: C/A, Rubber Tracks, GP Bkt., Aux. Hydraulics, 2050 hrs

2021 Bobcat T66, s/n B4SB14935: Canopy, GP Bkt., Rubber Tracks, 5010 hrs

Bobcat T650, s/n 180387: Canopy, No Bkt., Rubber Tracks, 3434 hrs

2017 Bobcat S740, s/n B3BT12593: Encl. Cab, Hyd. QC Bkt., Aux. Hydraulics, Rubber-tired, 948 hrs

2014 Bobcat S550, s/n A3NL11827: Rubber-tired, 4948 hrs

2004 Bobcat S160, s/n 526715923: Rubber-tired

2006 Bobcat S130, s/n 529211509: Rubber-tired 2005 Bobcat S130, s/n 527311190: Canopy, Rubber-tired, GP Bkt., 1946 hrs

2022 Bobcat S70, s/n B4TY13543: Canopy, Rubber-tired, GP Bkt., 967 hrs

2023 Bobcat S70, s/n B4TY13527: Rubber-tired 2021 Bobcat S70, s/n B4TY12573: Canopy, Rubber-tired, GP Bkt., 1664 hrs

2019 Bobcat S70, s/n B38V17875: Canopy, Rubber-tired, GP Bkt., 549 hrs

2022 Cat 259D3, s/n CW918924: Encl. Cab, 2-sp., Hyd. Quick Attach Bkt., Aux. Hydraulics, Rubber Tracks, 2346 hrs

2019 Kubota SVL95-2S, s/n 46998: Encl. Cab, GP Bkt., Rubber Tracks, Aux. Hydraulics, 2449 hrs

2018 Kubota SVL95-2S, s/n 40856: C/A, No Bkt., Aux. Hydraulics, Rubber Tracks, 2506 hrs

2017 Kubota SVL95-2S, s/n 34629: Encl. Cab, Hyd. QC Bkt., Rubber Tracks, Aux. Hydraulics, 889 hrs

2016 Kubota SVL95-2S, s/n 31829: 2288 hrs Kubota SVL95-2: GP Bkt.

2018 Kubota SVL75-2, s/n 36087: Canopy, Rubber Tracks, GP Bkt., Aux. Hydraulics, 2431 hrs

Kubota SVL75-2, s/n 31606: Canopy, Rubber Tracks, No Bkt., Aux. Hydraulics, 4946 hrs

2022 Kubota SVL65, s/n 17847: C/A, GP Bkt., Rubber Tracks, 276 hrs

2018 New Holland C237, s/n NJM446684: Canopy, No Bkt., Rubber Tracks

(2) Unused 2024 AGT MX-MRW14: 15hp Gas Eng., Bkt.

Unused 2024 AGT MX-CRT23: 23hp Gas Eng., Bkt. Unused 2024 CFG TK35R: 30HP Gas Eng., Bkt.

ASPHALT EQUIPMENT - Day 2 Ring 1<